

# SDS8020/SDS8040

Provides the hardware and software needed to meet industry standards for temperature uniformity surveys by logging and generating reports that address the **AMS 2750 D** and **CQI-9** specifications

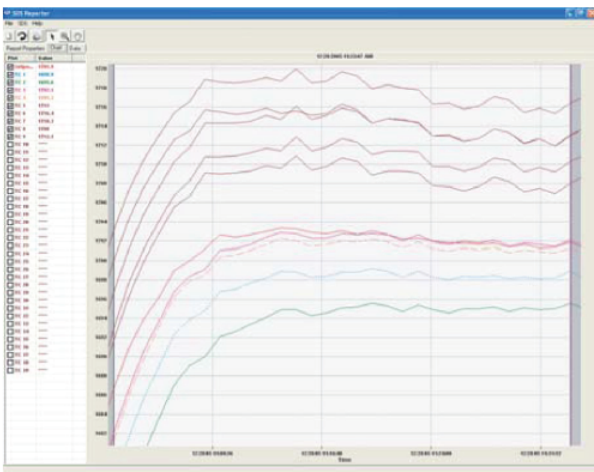


## Multi-Channel Data Logger

The portable and rugged data logger is easy to use and addresses the many industrial applications where logging, trending, and reporting are required. The SDS is available in either the 20 or 40 channel versions with user-defined inputs for each channel. The SDS includes software for managing surveys and generating custom reports based on survey results.

### SDS Specifications

- Built for industrial environments
- Designed specifically for temperature uniformity surveys
- Meets AMS 2750 D recording and reporting requirements
- AC (90 - 240 V) and DC power
- Approximately 12 hours of battery life
- Dimensions: 16"D X 20"L X 8"H
- Password protected menu options
- User defined logging intervals
- Easy calibration
- Web browser enabled for real-time view
- ETHERNET and RS232 serial communications



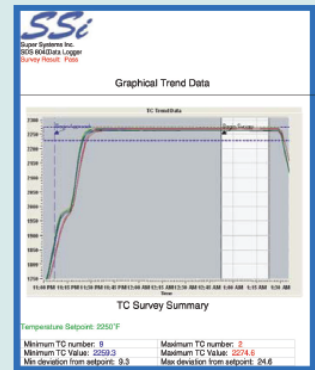
INNOVATIVE SOLUTIONS WORLDWIDE



**Super Systems**  
incorporated

# Industrial SDS Features

- Standard report format meeting AMS 2750 D temperature uniformity survey reporting requirements
- Automatically calculated survey performance parameters
- Automatically corrected values incorporating TC and input correction factors
- Easy to use keypad
- Quick view trend
- Survey data viewer
- Configuration and calibration screens
- Password protected screens
- Real-time data view
- User selectable control input channels
- Tolerance deviation alarm and history
- Automatic software updates available over the Internet at no charge
- User defined reports to meet company specific and industry standards



## AMS 2750 D Compliant

The easy to use Survey Template and Report Manager provides users with all the necessary tools to generate uniformity reports. The Report Manager includes a report writer that enables the user to setup reports to meet their specific requirements. The Template Manager allows survey specific data to be created, updated and used during the reporting process. All reports can be printed, saved electronically and e-mailed using the software utilities. The SDS software tools, along with the data logger, combine to create a powerful solution for data logging and reporting temperature uniformity surveys.

This screenshot shows a 'Temperature Uniformity Report' form. It includes fields for 'Survey Date', 'Survey Time', 'Survey Location', and 'Survey Operator'. Below these are sections for 'Survey Information' and 'Survey Results'. The 'Survey Information' section contains a table with columns for 'Parameter', 'Unit', 'Value', and 'Status'. The 'Survey Results' section contains a table with columns for 'Parameter', 'Unit', 'Value', and 'Status'. The form is titled 'Temperature Uniformity Report' and includes the SSI logo.

This screenshot shows a 'Survey Information' form. It includes fields for 'Survey Date', 'Survey Time', 'Survey Location', and 'Survey Operator'. Below these are sections for 'Survey Information' and 'Survey Results'. The 'Survey Information' section contains a table with columns for 'Parameter', 'Unit', 'Value', and 'Status'. The 'Survey Results' section contains a table with columns for 'Parameter', 'Unit', 'Value', and 'Status'. The form is titled 'Survey Information' and includes the SSI logo.



**SuperSystems**  
incorporated

7205 Edington Drive  
Cincinnati, OH 45249  
513.772.0060 **phone**  
513.772.9466 **fax**

[www.supersystems.com](http://www.supersystems.com) 800.666.4330